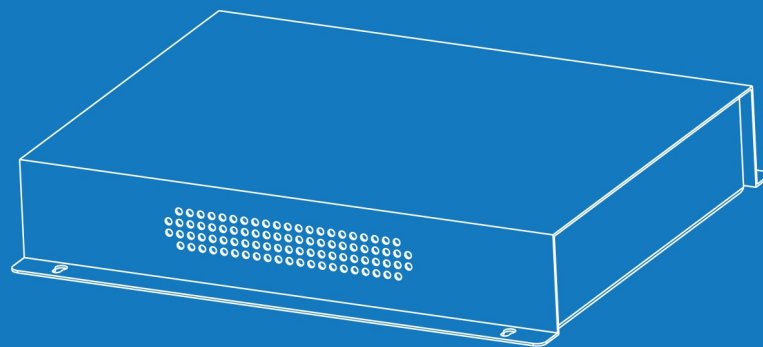


***SPON***

# IP NETWORK AUDIO TERMINAL

User Manual



# Contents

<b>Summarize</b> .....	<b>1</b>
Safety Precaution.....	1
Production Introduction.....	2
Interface instruction.....	2
<b>Introduction</b> .....	<b>3</b>
Packing List.....	3
Wiring.....	4
Basic Network Settings.....	4
<b>Terminal Parameters Customization</b> .....	<b>5</b>
Web Interface Login.....	5
Network Parameters.....	6
Device Parameters.....	7
Service Parameters.....	7
Broadcast Parameters.....	8
Password Settings.....	9
Modify Port.....	9
Language Settings.....	9
Reboot Device.....	10
Restore Factory Default Settings.....	10
Firmware Upgrade (Note: Do not upgrade the firmware unless there's a special need).....	11
System Log.....	11
Other Functions.....	12
<b>Troubleshooting</b> .....	<b>12</b>
<b>Copyright Announcement</b> .....	<b>13</b>

## Summarize

### Safety Precaution

Please comply with warnings and relevant safety tips.

After reading this manual, please put this manual in accessible place for future reference.

### Warnings



This sign means there are potential safety hazards when opening the device, misoperation may result in severe injury or death.



This sign is used to remind the user that the attached files of this device contains important operation and maintenance instructions.

### Installation & Setting

- (1) The installation environment of the equipment should have good ventilation.

Do not install the equipment in the environment which is wet, dusty, exposed to direct sunlight, close to electric heater or smoke, otherwise it might cause fire or electric shock.

- (2) Do not expose the machine to rain or other environment that may be contaminated by water or other liquids, otherwise it might cause fire or electric shock.

- (3) Do not block the vent

If the radiator is blocked, it will cause heat to accumulate inside the machine and may cause a fire.

- (4) Do not use power supply with unspecified voltage.

Must use the voltage identified by the device to connect the machine.

Using voltage higher than the the identified voltage might cause fire or electric shock.

- (5) Do not scratch the power cord.

Do not scratch the power cord, and do not cut & twist the power cord.

Meanwhile, keep the power cord away from heating element, do not place any heavy objects on the power cord (including the machine itself), otherwise it might cause fire or electric shock.

- (6) Providing the power supply with independent, reliable ground wire for the device.

In the process of engineering construction, the ground wire of the equipment must be connected to the earth, otherwise it might cause malfunction or damage of the equipment.

- (7) Equipment must be installed by professional technical staff.

### During Using

- (1) In case of abnormal occurrence:

In the process of using, please cut off the power immediately once finding any abnormal occurrence as below and get in contact with the distributor.

If continuing using, it might cause fire or electric shock.

- The machine is smoking or emitting strange smell.
- The interior of the machine is invaded by water or foreign matters.
- The machine has fallen down, or the shell of the machine is damaged.
- The power cord is damaged (wire core exposure or broken wire, etc.)
- Malfunction (cannot be connected to network or no sound, etc.)

- (2) Keep any foreign bodies out of the machine.

Do not let metal objects, inflammable objects or other foreign bodies get in the vent or inside the machine, otherwise it might

cause fire or electric shock.

(3) Do not put liquid containers or small metal objects above the machine.

If accidentally knock over the containers and let the liquid get inside the machine, it might cause fire or electric shock.

(4) Do not open the machine or transform the machine.

The machine contains high-voltage parts, once the outer cover is opened or transforming the machine, it might cause fire or electric shock.

All matters related to maintenance and machine interior modification shall be handled by professional personnel.

(5) Matters needing attention during maintenance or when the machine is not in use for a long time:

During maintenance, when the machine is not in use for 10 days or above, to ensure safety, please cut off the power and pull out the power plug.

Not complying with relevant provisions might cause fire or electric shock.

**Production Introduction**

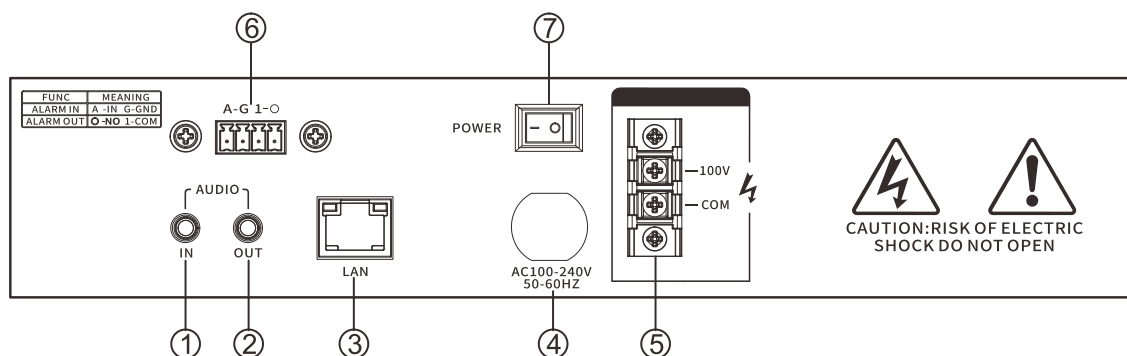
The IP network audio terminal adopts high-performance power amplifier, equipped with power input, analog audio input/output, network input, alarm input/output and other interfaces. It has the characteristics of high efficiency, high performance, low distortion, etc., and the sound quality is more perfect.



- High-speed industrial-grade dual-core (ARM+DSP) chips, starting time ≤ 1 second.
- Built-in network audio decode module, it with independent WAV,MP3 double decoding chip.
- Supportive of timing ringing, real-time acquisition and broadcasting cooperated with server, supports remote digital volume adjustment;
- With one audio input and one audio output;
- With one alarm input and one alarm output
- Constant pressure 100V output
- With a standard RJ45 interface,supportive of crossing network segment and router, accessible to the system if the Ethernet is available;

**Interface instruction**

Side



①AUDIO IN: Audio input interface, make the external sound source (for example: computer, DVD and so on) connect to this port.

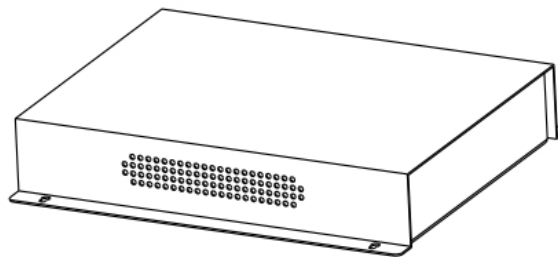
- ②AUDIO OUT: Audio output interface. This port output the restored audio signal, it can be the sound sources access to audio pre-amplifier, audio amplifier, sound console devices and so on.
- ③Lan: RJ45 network interface, which connects to Ethernet via network cable
- ④power input port: AC100-240Vpower input port
- ⑤100V constant voltage power amplifier output port, can be connected to constant pressure speakers, fixed pressure horn and other amplifiers.
- ⑥Alarm input/ output interface  
 A-G alarm input interface, when two pins be short circuited, audio terminal will execute the special operations automatically(eg: generate alarm signal send to server or raise the alarm at local terminal).Alarm button, alarm signal generator and other devices can generate the alarm signal all can access to the port.  
 O-1 alarm output interface, alarm output is triggered by software server, it also can trigger through alarm input or shutoff signal. Play the alarm function (eg: open the electronic lock door) alarm output port maximum loaded current is 1A, the highest voltage is AC100V(or DC24V).
- ⑦Power switch: press “O”close the power, press “—”open the power.

## Introduction

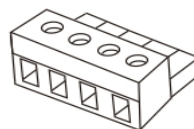
### Packing List

IP network audio terminal contains the following accessories. Please check the accessories before installation. If any accessories are missing, please contact your distributor

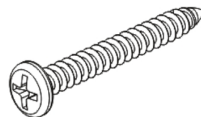
- (1) IP network audio terminal 1pcs



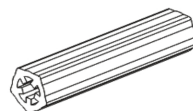
- (2) Wiring Terminal (3.5-4P) 1pcs



- (3) Round head Phillips screw (M4\*25) 4pcs



- (4) Plastic expansion sleeve (F7) 4pcs



- (5) foot pad (Φ12\*3 3M) 4pcs

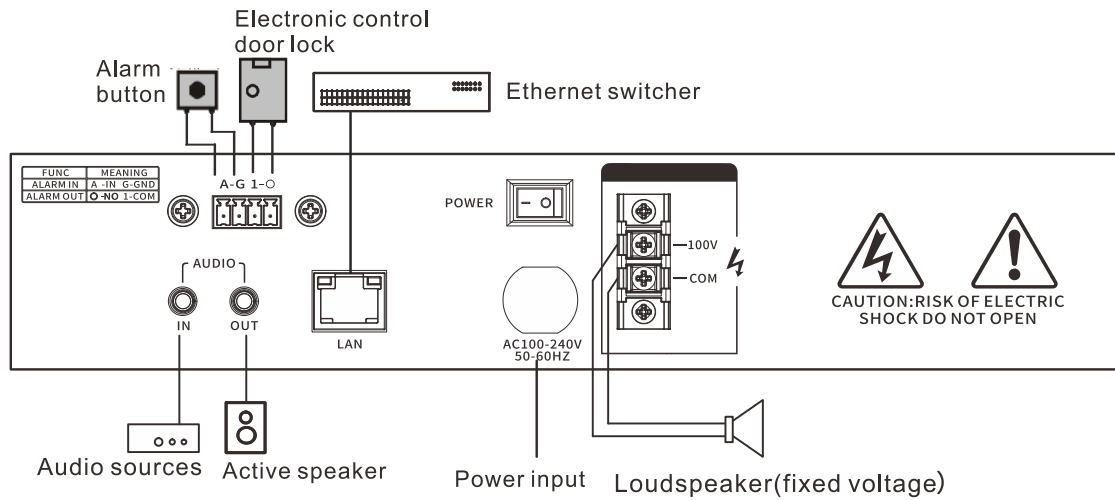
(6) Certification 1pcs



(7) Installation Instruction 1pcs



**Wiring**

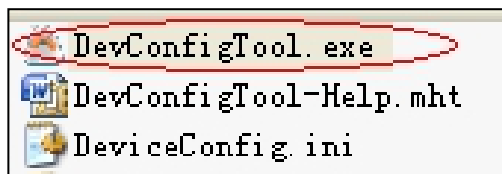


**Basic Network Settings**

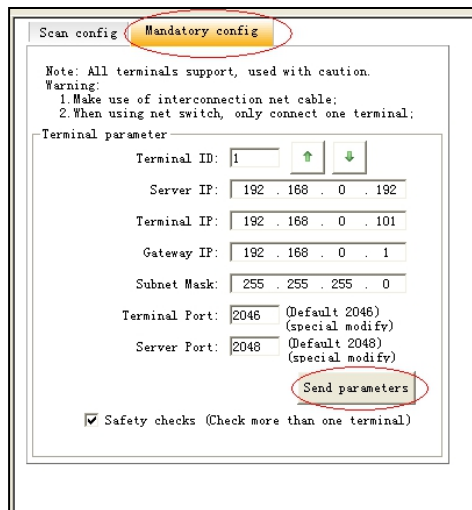
After connecting the terminal, turn on the power and change the network parameters of the terminal according to the on-site use environment

**Terminal Equipment Scanning Tool**

(1) Run "IP Audio Terminal Configuration Tool", and after startup, enter the default password "123456".



(2) Choose **【Mandatory Configuration】** from the menu on the right side, then fill in correct parameters in the **【Terminal Parameters】**, click "send parameters" button to finish the IP parameters settings.



**Note:**

- 1) If using Windows 7 system, please use the administrator mode to run the program, and close the firewall or other related software;
- 2) Terminal configuration tool can only configure one terminal at one time, please make sure that a computer has only connected to one terminal when using this method to configure the network parameters of the terminal.
- 3) If you need [IP Audio Terminal Configuration Tool] software, please contact our company's after-sales customer service.

**Through Web Interface**

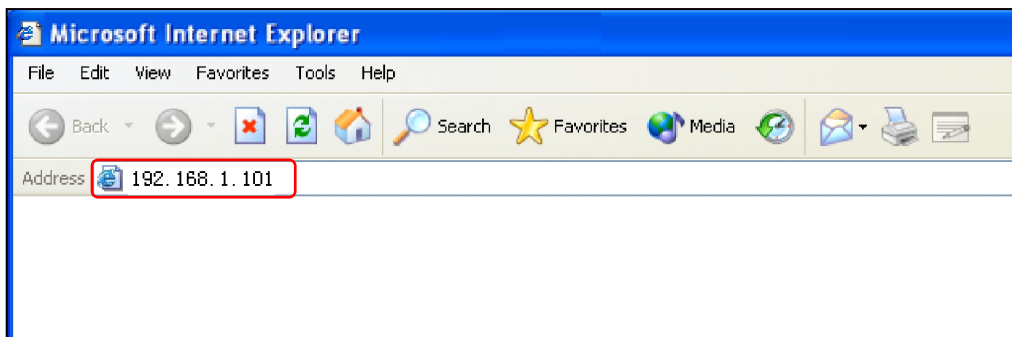
Enter into the Web interface of IP network digital power amplifier, then change the network parameters of the terminal according to the operational environment, after the setting, click “Save” button.

For specific operation steps, you can take the network parameters settings in the terminal parameters customization for reference.

## Terminal Parameters Customization

### Web Interface Login

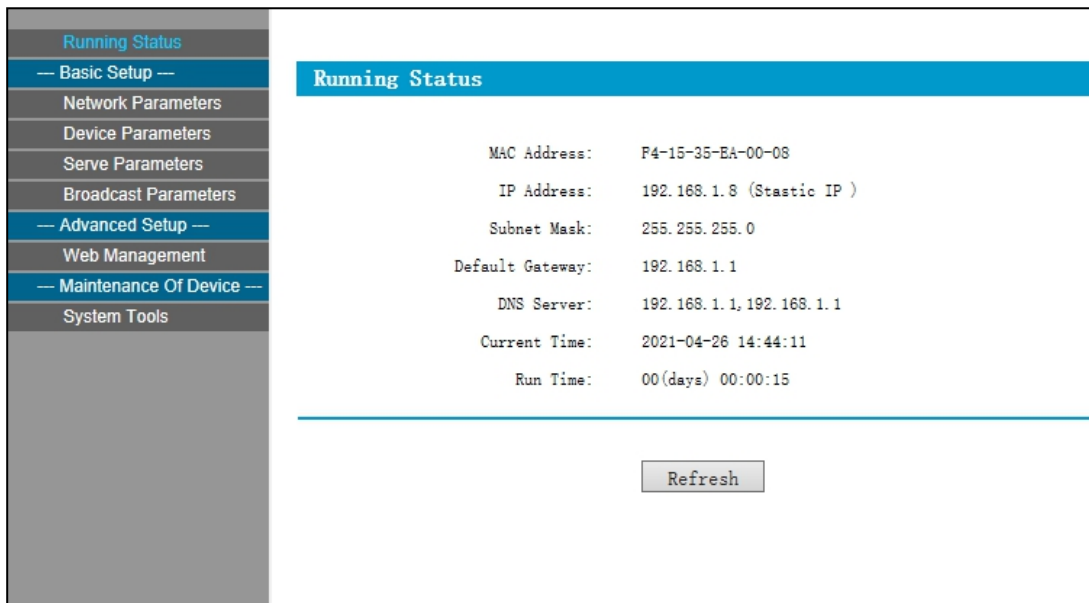
- (1) Enter the IP address (Factory Default IP is 192.168.1.101) of the IP network digital amplifier in the browser address bar, then press the Enter key.



- (2) Enter the user name and password (Defaults are both “admin”) in the login window of the Web interface.

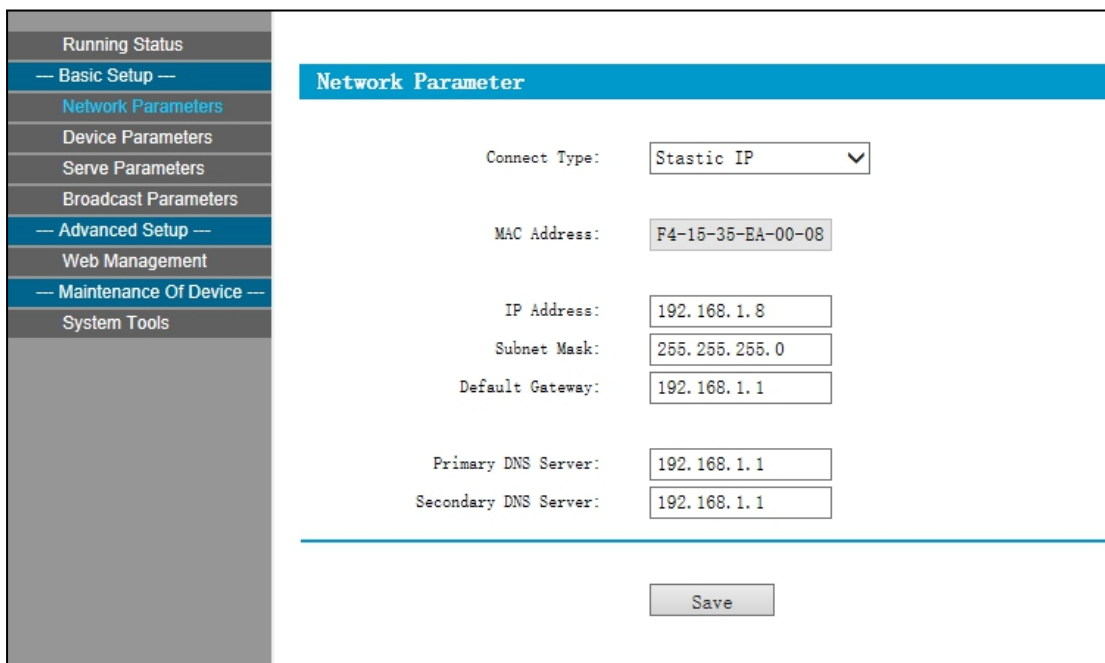


(3) Press “Login”, then enter the Web interface of the IP network digital amplifier. (Remark: Please clear caches then set up again if former saved parameters don’t take effect in the web page.)



### Network Parameters

Set the network parameters, please modify the parameters according to the live environment, save setting, and restart the device to take effect.



Meanings of the parameters:



Connection Type	Static IP: static IP is used by default, user-defined IP address and other information. Dynamic IP: IP address is dynamically allocated through DHCP.
IP address	The IP address of the terminal, factory default IP is 192.168.1.101, it cannot be the same as other terminals.
Subnet Mask	Subnet Mask of the device.
Default Gateway	The gateway of the network of the device.
Primary DNS server	The IP of the primary DNS of the network of the device.
Secondary DNS server	IP of the secondary DNS of the network of the device.

**Device Parameters**

Set the terminal Device parameters and save, then restart the device to take effect.

Meanings of the parameters:

Device ID	The unique number of the identified device, which cannot be repeated with the terminal or other host, factory default is 1.
Receive port	The port of the device. Note: the port should not be modified except under special circumstances.
Alarm output	Open: alarm input can linkage alarm output; Forbid: alarm input cannot linkage alarm output;

**Service Parameters**

Set server platform parameters for terminal login. Save after setting, restart the device to take effect.

Running Status	<div style="background-color: #0070C0; color: white; padding: 5px; text-align: center;"><b>Service Parameters</b></div> <div style="display: flex; justify-content: space-between;"> <div style="width: 40%;"> <p>Primary Server: <input type="text" value="192.168.1.13"/> : <input type="text" value="2048"/></p> <p>Secondary Server: <input type="text" value="192.168.1.14"/> : <input type="text" value="2048"/></p> <p>FTP Name: <input type="text" value="admin"/></p> <p>FTP Password: <input type="text" value="admin"/></p> <p>Login Request Gaptime: <input type="text" value="3s"/> ▼</p> </div> <div style="width: 50%; text-align: center;"> <input type="button" value="Save"/> </div> </div>
— Basic Setup —	
Network Parameters	
Device Parameters	
Service Parameters	
Broadcast Parameters	
— Advanced Setup —	
Web Management	
— Maintenance Of Device —	
System Tools	

Meanings of the parameters:

Primary Server	The server address where the device is logged in, the factory default setting is 192.168.1.13.
Secondary Server	When the primary server fails to connect, the secondary server can be logged in. After the primary server can be connected, the terminal can log in again to the primary server, the factory default setting is 192.168.1.14.
FTP User Name	The user name used for the login of FTP, factory default is admin.
FTP Password	The password used for the login of FTP, factory default is admin.
Login Request Gaptime	When the device is offline, the interval time of applying to the login to the server.

### Broadcast Parameters

The encoding format and sampling rate of audio parameters are controlled by the server without setting.

The broadcast volume in the broadcast parameter is the volume when the terminal is offline broadcast. The broadcast volume is controlled by the server when the terminal is online.

Running Status	<div style="background-color: #0070C0; color: white; padding: 5px; text-align: center;"><b>Broadcast Parameter</b></div> <div style="display: flex; justify-content: space-between;"> <div style="width: 40%;"> <p>Code Format: <input type="text" value="PCM"/></p> <p>Sampling Rate: <input type="text" value="22050"/></p> <p>Broadcast volume: <input type="text" value="7"/> ▼</p> </div> <div style="width: 50%; text-align: center;"> <input type="button" value="Save"/> </div> </div>
— Basic Setup —	
Network Parameters	
Device Parameters	
Service Parameters	
Broadcast Parameters	
— Advanced Setup —	
Web Management	
— Maintenance Of Device —	
System Tools	

## Password Settings

You can modify the account and password through web management parameters .After setting, please restart the web page

Running Status	<div style="border: 1px solid black; padding: 10px;"> <div style="background-color: #0070C0; color: white; padding: 5px; text-align: center;"><b>Modify WEB Management Password</b></div>   <p>The Original User Nname: <input type="text" value="admin"/></p> <p>The Original Password: <input type="password"/></p> <p>New User Name : <input type="text"/></p> <p>New Password: <input type="password"/></p> <p>Confirm New Password: <input type="password"/></p> <hr/> <p style="text-align: right;"><input type="button" value="Save"/> <input type="button" value="Empty"/></p> </div>
— Basic Setup —	
Network Parameters	
Device Parameters	
Serve Parameters	
Broadcast Parameters	
— Advanced Setup —	
<b>Web Management</b>	
– Modify Password	
– Modify Port	
– Modify language	
— Maintenance Of Device —	
System Tools	

## Modify Port

For the port to access this WEB page, if it is not port 80, please add the corresponding port after the address when accessing this WEB page.(example: set the port to 8888, then the access address is: http://XXX.XXX.XXX.XXX:8888).

Running Status	<div style="border: 1px solid black; padding: 10px;"> <div style="background-color: #0070C0; color: white; padding: 5px; text-align: center;"><b>Modify Web Management Port</b></div>   <p>Web Management Port: <input type="text" value="80"/></p> <hr/> <p style="text-align: right;"><input type="button" value="Save"/></p> </div>
— Basic Setup —	
Network Parameters	
Device Parameters	
Serve Parameters	
Broadcast Parameters	
— Advanced Setup —	
<b>Web Management</b>	
– Modify Password	
– <b>Modify Port</b>	
– Modify language	
— Maintenance Of Device —	
System Tools	

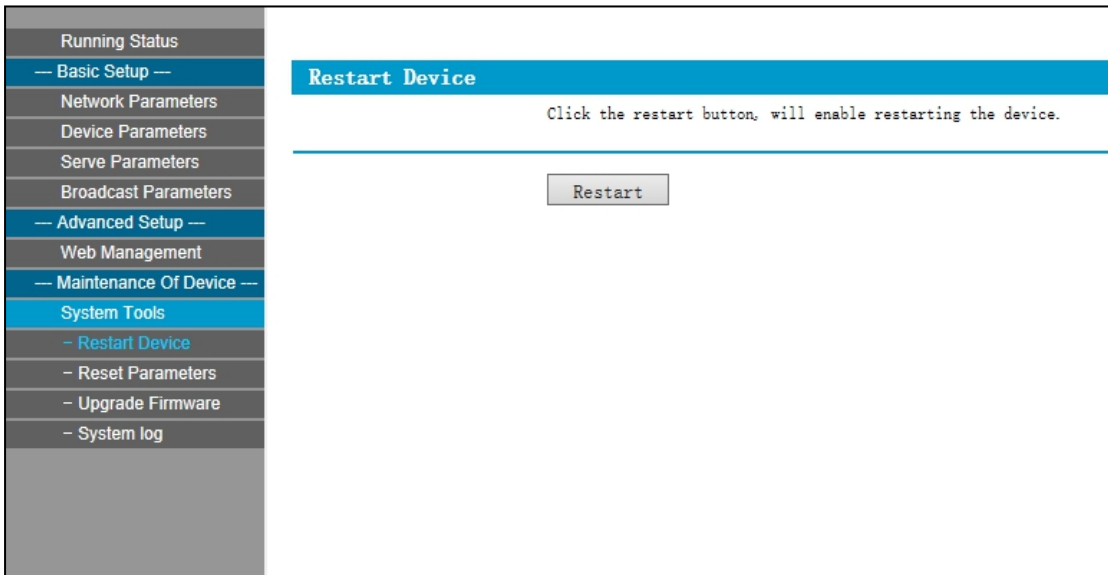
## Language Settings

Users can change it between Chinese and English through web settings .



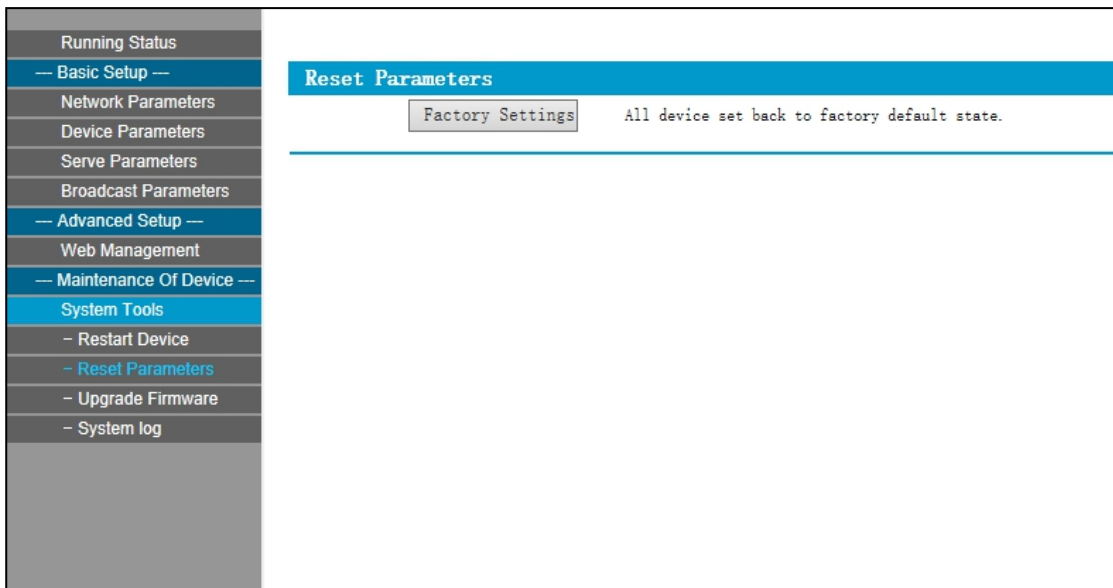
### Reboot Device

Click “reboot the device” button can manually reboot the device.



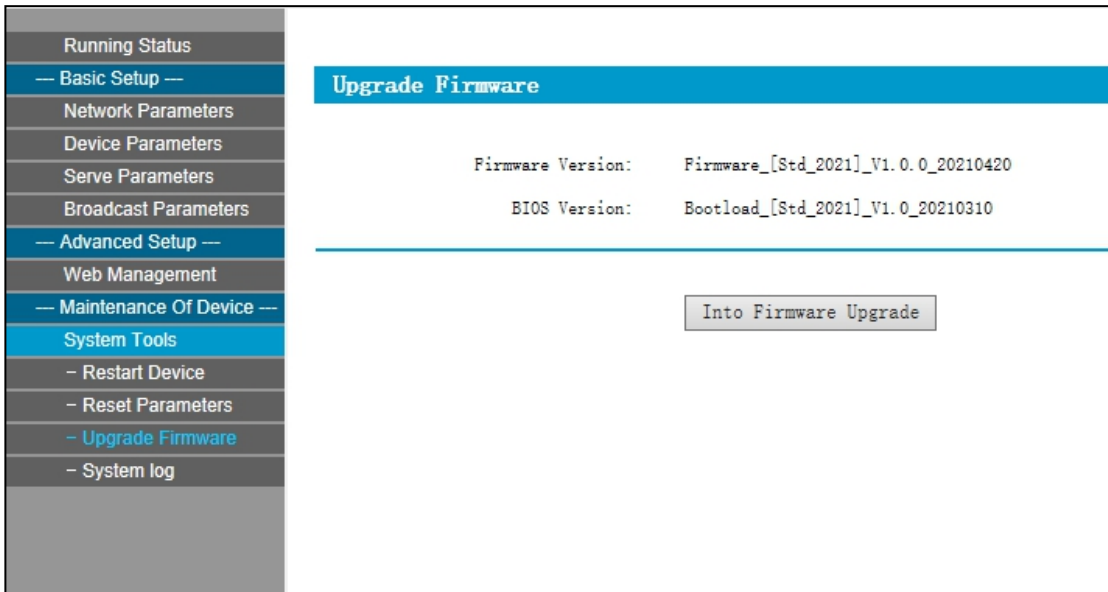
### Restore Factory Default Settings

Restore factory setting: all parameters were restored to factory setting.

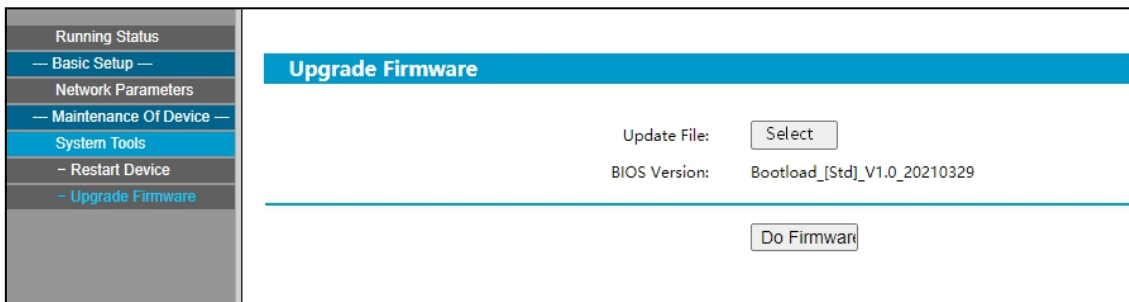


**Firmware Upgrade (Note: Do not upgrade the firmware unless there's a special need)**

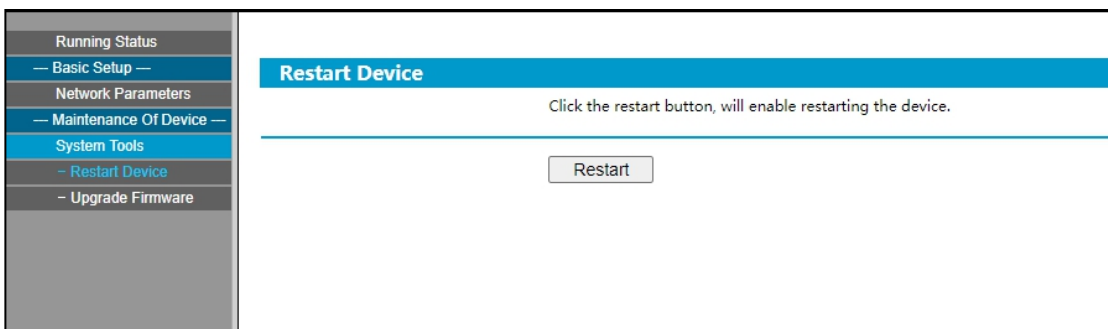
(1) Click the “Press” button, the device will enter into upgrade mode in 10s. (If the web shows an exception after entering upgrade mode, please clear the cache and login the web page again)



(2) After entering into the firmware upgrade mode, select the firmware upgrade file provided by the manufacturer, then click the “upgrade” button to start upgrade. (Do not power off during the upgrade process, otherwise it may cause the upgrade failure and equipment failure)



**Exit upgrade mode:** If click the “upgrade” button by mistake, you can click the “reboot the device” button in the upgrade mode, then reboot the device to get back to normal mode.



**System Log**

IP network terminal can record the operating condition and form log, the user can browser the system log in web page.

Index	The Log Content
1	04-21 16:58:22 Reboot: code(1)
2	01-01 12:00:03 Logining: 192.168.1.13 : 2048
3	01-01 12:00:12 Logining: 192.168.1.13 : 2048
4	04-21 17:02:08 Reboot: code(4)
5	01-01 12:00:03 Logining: 192.168.1.13 : 2048
6	04-21 17:02:30 Web config changed: code(0)
7	04-21 17:02:30 Reboot: code(4)
8	01-01 12:00:03 Logining: 192.168.1.13 : 2048
9	04-21 17:02:02 Web config changed: code(0)
10	04-21 17:02:02 Reboot: code(4)

1 2 3 4 5 6 7 8 9 10 11 12 13

Refresh Clear All The Log

## Other Functions

In addition to the above functions, the network audio terminal can also cooperate with the server to realize functions such as ringing/receiving programs/receiving broadcasts/receiving alarms, etc. For specific operations, please refer to the service software operation guide.

## Troubleshooting

### Terminal unable to log in to server?

1. Check whether the service software and the main control machine are opened normally. Before opening the service software, it is necessary to close all the firewalls (including the firewalls of the system and other antivirus software);
2. Check whether the network connection is normal, check the network cable and switch connected with the terminal to see whether there is normal operation, damage, bad contact and other phenomena;
3. Check the IP setting of the terminal. Check whether the terminal's ID number, service IP, local IP, gateway IP and other parameters are set correctly;

### Internet Broadcast no sound

1. Check whether the terminal is online;
2. Check whether the MIC3 is plugged into the microphone, MIC3 and network broadcasting are mutually exclusive;

### The power can't turn on, LCD screen without display

1. Checking the power plug is loosen or not and the power line is good or not.
2. Checking the power socket insurance is burnout or not.

# Copyright Announcement

---

## Copyright

The copyright is reserved of the SPON Communication Technology Co., LTD (abbreviation SPON), if without the permission of the company in written form, any company and personage shall not arbitrarily excerpt, copy mentioned file information, and shall not spread in any forms.

According to the legal provisions, copy including translate to other language or switch to other format. Mentioned document spreading in network media, SPON allow download and print for personal uses. Any parts of the document can not be modified and for commercial uses. If any damage and losses which is caused by illegality modify and switch the document, SOPN shall not take any responsibility.

## Guarantee

Regarding to the information of the mentioned handbook, if any modify, kindly understand that there is no any notice.

The handbook shall provide the correct indication, information and suggestion, and not guarantee to any indicated and implied information. User should take the responsibility of the products applying.

SOPN shall not making any guarantee for the handbook, including but not only for the guarantee of implied marketability and specific purpose. Also SPON shall not take any responsibility, if any indirect or incidental losses caused by mistaken use of the handbook.



Wechat

SPON Communication Technology Co., Ltd.  
www.spon.com.cn  
Service Hotline: +86-400-823-2588  
Reserve the amendment right without notice

